



City of Westminster

Business, Planning and Transport Policy and Scrutiny Committee Briefing

Date: Monday 12th June 2017

Portfolio: Cabinet Member for City Highways

Briefing Author and Contact Details: Councillor Danny Chalkley
dchalkley@westminster.gov.uk
 0207 641 2228

1 Transport

1.1 The 20mph trial has begun and the trial will be fully supported by a comprehensive Communications Plan. A Vehicle Activated Sign (VAS) scheme consisting of 40 illuminated signs has already commenced to ensure that residents, affected schools and key stakeholders are informed about the scheme. Consistent traffic count and vehicle speed monitoring will also be undertaken during and after the trial.

2 Highways

2.1 The table below shows the performance for reactive highway works on the carriageway and footway.

	Feb/March Average Performance		April Performance		Target from 1 April 14	Previous Contract Target
Priority 1 (2 hour)	99%	↑	100%	↑	98%	98%
Priority 2 (24 hour)	97%	↔	97%	↓	98%	95%
Priority 3 (10 day)	95%	↑	90%	↓	98%	90%
Priority 4 (28 day)	95%	↔	N/A		98%	83%

2.2 Performance targets were achieved for 2 hour jobs, but were below the Service Level Agreement (SLA) target for 24 hour and 10 day jobs. To remedy this, workshops have been arranged to improve our reactivity.

3 Preventative Maintenance – 17/18

3.1 **Planned Preventative Maintenance Footway – outturn 2016/17:** There are four footway schemes which have been carried forward into the 2017/18 financial year, as detailed below:

- Belgrave Road
- Moorhouse Road
- Newton Road
- Wilfred Street

3.2 **Planned Preventative Maintenance Carriageway – outturn 2016/17:** With the exception of Woodfield Place, all the approved PPM carriageway works in 2016/17 have been completed. Woodfield Place is programmed for August 2017, as the scheme is being co-ordinated with the Local Safety Scheme proposals.

3.3 **Planned Preventative Maintenance - Drainage Further Works – outturn 2016/17:** A new gully pot has recently been installed in Princes Mews and that works programme has been completed. Work has started on Bentinck Street, in order to carry out a deep excavation. A works programme is also currently being planned for Maida Vale, in order to restore the new manhole connection.

3.4 **Planned Preventative Maintenance Footway – 2017/18:** The following footway reconstruction schemes are either completed, or are currently on site:

Street	Start date	Expected completion date	Status
Kensington Gore	3 April	28 April	Completed
Manchester Square	10 April	12 May	Completed
Shirland Road	10 April	5 May	Completed
Gloucester Terrace	8 May	30 May	Completed
Seymour Place	10 April	16 June	On site
Harley Street	10 April	21 July	On site
Wimpole Street	10 April	16 June	On site
Craven Road	8 May	28 July	On site
Great Titchfield Street	15 May	2 June	On site
Drummond Gate	25 May	16 June	On site

3.5 Planned Preventative Maintenance Carriageway – 2017/18: The following carriageway resurfacing schemes are either completed or currently on site:

Street	Start date	Completed date/ Expected completion date	Status
Sutherland Street	10 April	13 April	Completed
Lexington Street	24 April	24 April	Completed
Ponsonby Place	25 April	25 April	Completed
Rochester Row	26 April	28 April	Completed
Kensington Road core resurfacing scheme	26 April	27 April	Completed
Kensington Road key junction scheme	28 April	28 April	Completed
Greencoat Place	2 May	2 May	Completed
Thirleby Road	8 May	9 May	Completed
Halkin Place	26 May	26 May	Completed
Kilburn Park Road	30 May	31 May	On site
Wilton Road	30 May	31 May	On site





4 Parking

4.1 I have given my approval for a range of parking-related Low Emission Neighbourhood (LEN) initiatives to go ahead, including a 50% diesel surcharge on paid-for parking in the LEN area. This will see pre-2015 diesel vehicles charged £7.35 per hour to park in F zone (Marylebone, Hyde Park and Fitzrovia). Mobilisation has begun and implementation is planned for Monday 26th June.

4.2 Following the implementation of the Fees and Charges policy changes in March and April, Electric and Plug-in Hybrid Electric Vehicles will be subject to full Penalty Charge Notices (PCN). The nominal 10 minutes payment policy began on 8th May.

5 Lighting

5.1 The table below shows the current performance for reactive responses for lighting. The performance on both service levels has exceeded requirements for both Jan/Feb 2017 average and March 2017.




	Feb/March Average Performance		April Performance		Target from 1 April 14	Previous Contract Target
Priority 1 (2 hour)	99%		98%		98%	98%
Priority 3 (48 hour)	100%		99%		98%	90%

5.2 **Outages:** To date, the percentage of outages, as of the end of April 2017, is recorded as 2.6% against our target of 3%.

5.3 **Long Term Faults:** At the end of April, there were 29 jobs more than 40 days old. 23 of these jobs required work by UK Power Network.

6 Road Management

6.1 The table below shows the number of Fixed Penalty Notices issued to work promoters for failure to correctly apply for Permits to work. This includes both the utilities and our own contractors. Service meetings have been scheduled to ensure performance issues are promptly resolved on the back of April's performance data.

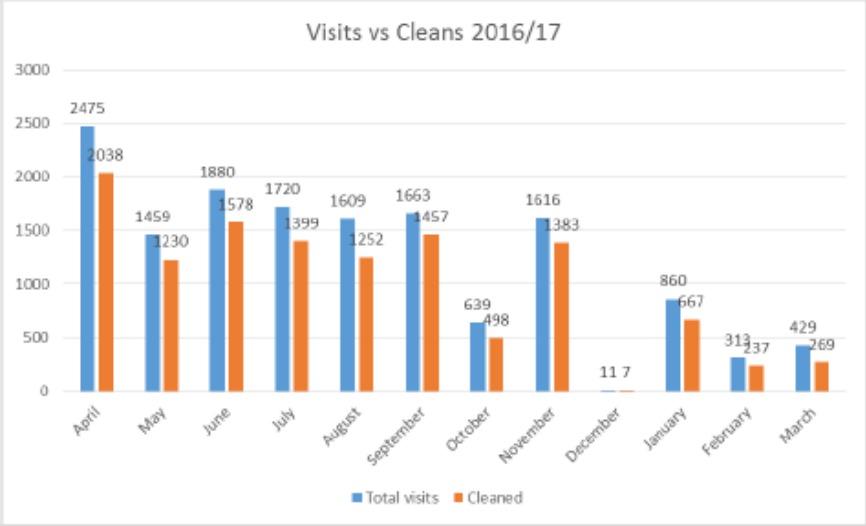
	February Performance		March Performance		April Performance		Target
FPNs	108		74		66		60

6.2 The table below shows the volume of Utility works, Cranes on the highway, and Road Closures across the entire network.

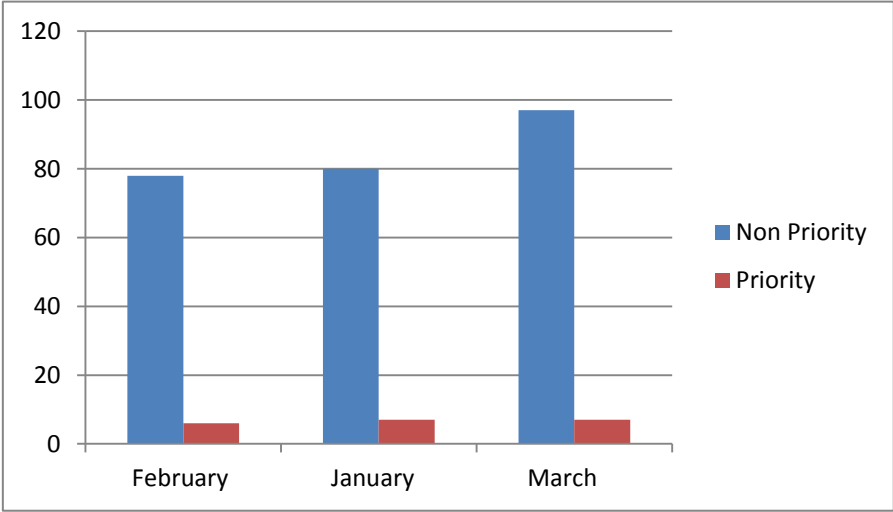
	March Performance	April Performance	Previous three months' average
Utility Works Started	794	768	643
Council Works Started	1025	760	876
Crane Licences	85	89	62
Road Closures	113	109	100

7 Drainage

7.1 Gully Service: We have 14k gullies in Westminster, which are all included in the 2017/18 routine maintenance gully cleaning programme. The graph below shows the number of visits compared to cleans during 2016/17, with failed gully cleans being mainly due to parked cars. We have plans for a dedicated vehicle lifter to work alongside our service provider to enable gullies to be cleaned.



7.2 The graph below shows the number of priority and non-priority enquires which were attended to by our service provider over the three months to March 2017:



7.3 Drainage Improvements: Funding has been approved in 2017-18 to develop an integrated surface water management programme which consolidates drainage improvements at known locations with significant problems. This work will also integrate with the studies being undertaken as part of the council’s responsibilities as a Lead Local Flood Authority and a number of identified flooding ‘hotspots’ which may require enhanced maintenance regimes whilst improvement schemes and businesses cases are developed with the Environment Agency. With regard to developing an integrated surface water management programme, initial tasks and scope with associated fees has been agreed and briefs issued.